



THE ARC LEGACY CENTER

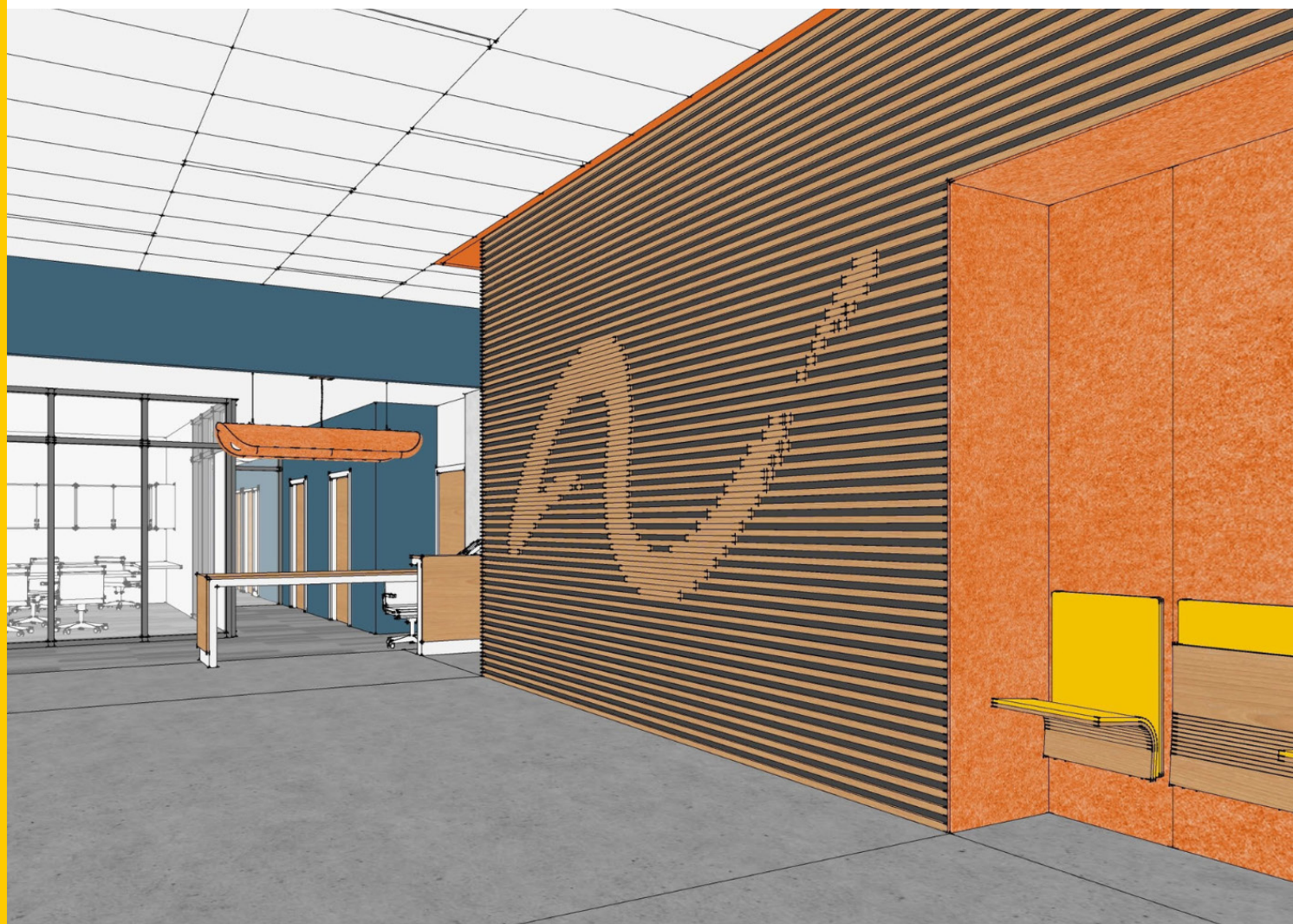
An Innovative Hub of Consolidated Services and
Affordable Housing for the IDD Community



Transforming Lives

The Arc Legacy Center will be an accessible hub for the intellectual and developmental disability (IDD) community. The building combines consistent access to the resources and services at The Arc of King County headquarters while providing autonomy and independence for residents to live in safe, inclusive, and affordable apartment homes.

The Arc of King County and Mercy Housing NW are joining forces to establish an innovative and accessible building. This partnership, the first of its kind for the IDD community in the region, will create an affordable housing community specifically designed for the unique needs of individuals with IDD, while also providing space for The Arc of King County's new headquarters, located on the bottom floor of the building.



Uplifting People

The 7-story building, nestled next to the Sound Transit light rail station at Angle Lake in SeaTac, includes 11,000 sf for our new home, a permanent and stable nexus for the work we do and the services we provide. The ownership of our headquarters will ensure our long-term ability to fulfill our mission.



Mission

Advocate for the rights of people with IDD to live, learn, work, and play in the community improving the quality of life for all of us

The single-story, accessible headquarters hosts a community gathering space to provide regular and in-person social, educational, and programmatic activities. The Arc Legacy Center is conveniently located in South King County, an area where most of our constituents live and has historically faced the greatest barriers. All the major bus, light rail, and car travel pathways are nearby, providing easy access to services, schools, and jobs.

The development also includes 130 affordable, energy efficient apartment homes, with 26 units specifically reserved for individuals with IDD and referred by The Arc. These highly accessible apartment homes will range from studios to three bedrooms and will have access to both The Arc's services and Mercy Housing NW's resident services onsite, specifically tailored to resident needs. The building will provide expanded accessibility for residents, their families, and guests with mobility limitations and environmental stimuli sensitivity in both the private and public spaces.

Influencing Generations

A permanent, physical location provides connection, gathering opportunities, and program delivery in person. The Legacy Center will allow for the return of beloved gatherings, such as social events, educational opportunities, and direct connection with support teams. In the past, our spaces have been limited in accessibility, public transportation options, and space large enough to meet the needs of our participants. That all changes when the doors of our new home are opened in mid 2025. See the timeline below for key milestones on our path to ownership.

Project Timeline

Late 2023
Ground breaking

Late 2024
Housing referrals

Early 2025
Pre-leasing

Mid 2025
Opening!

While this development marks a significant win for the IDD community, there is still a lack of housing available. In response to this ongoing need, we intend to use this model to build more developments designed for the unique needs of our community and to ensure future affordable housing opportunities for individuals with IDD. **This is a pivotal moment for The Arc to begin addressing the affordable housing crisis.**

Our New Home

At 11,000 sf, The Legacy Center is our largest office space to date and is designed to support our staff and program capacity needs while also allowing for greater community gathering opportunities.



Key space amenities we are excited to share with our community include:

- Deliberate design and inclusion of accessibility and sensory amenities **beyond ADA requirements** throughout the building
- Offices and cubicles to host about 40 office-based staff
- Large and flexible multi-purpose space
- Meeting rooms for individualized support from The Arc staff
- Quiet and comfortable sensory space for employees and guests
- Gender neutral and ADA accessible bathrooms
- Dedicated parking garage connected directly to The Legacy Center
- Laundry, shower, and changing facilities onsite to support bike commuters, Supported Living participants, and staff
- High ceilings and lots of windows providing natural light and spacious areas for gathering and connecting.

We Listen. We Advocate.

The Arc of King County is a trusted, reliable, community-centered organization. Since 1936 The Arc has been a leader in serving individuals with IDD and their families, from prenatal diagnosis through end-of-life care.

We walk side by side and hand in hand with individuals with disabilities and their families and caregivers, providing:

- Supported Living and Financial Management services for adults with IDD no longer living with their families
- Support to navigate applications, services, and systems across the individuals' lifespan
- Training, education, and technical assistance
- Connection between parents and families on similar journeys through support groups, workshops, and activities
- Advocacy education, communication, and leadership development

We Support You.

Over 36,000 people living in King County have an intellectual or developmental disability and many are underserved or unserved by community resources. People with IDD have some of the lowest life outcome of any minority group and navigating disability services and resources is complicated, challenging, and complex. Throughout our long history of service, The Arc is known for supporting you and ensuring you access to the resources you need to live the life you want.

Make This Vision A Reality

A building is a physical representation of connection, support, and empowerment. The Arc Legacy Center will cement our ability to provide services and programs to the IDD community for decades to come.



Making this vision a reality will require our whole community rallying together.

Today we invite you to join The Campaign for The Arc Legacy Center.

Join us by making a gift, providing connections, or ideas. We value and welcome your thoughts and partnership during this early stage of the campaign.

Our vision for the future is only possible with your support. For more information about how you can help build The Arc Legacy Center, please contact us.

Robin Tatsuda

Executive Director
The Arc of King County
rtatsuda@arcofkingcounty.org

Stacia Irons

President
Board of Directors
siron@arcofkingcounty.org



Images courtesy of The Arc of King County
www.arcofkingcounty.org



@arcofkingcounty